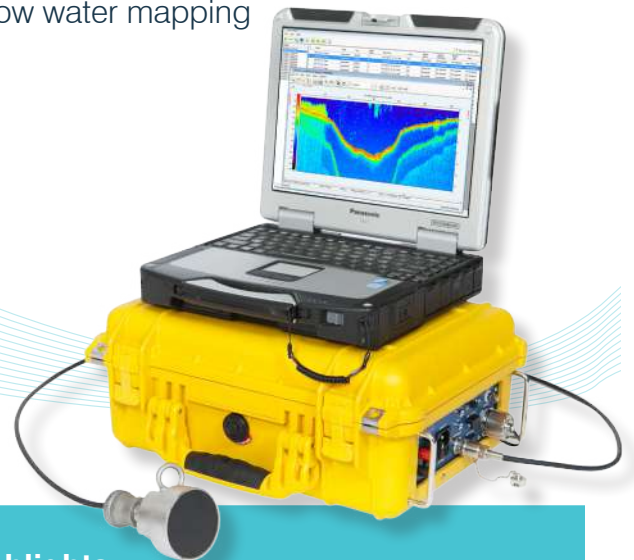


MX

AQUATIC HABITAT ECHOSOUNDER

Applications

- Map submerged aquatic vegetation
- Map eelgrass and other habitat areas
- Track invasive aquatic weeds
- Delineate areas of sand, mud, rock
- Generate contour profiles
- Shallow water mapping



Product Highlights

- Simultaneously map submerged aquatic vegetation, classify substrate, and collect bathymetry data
- Portable, weatherproof, and rugged with storage for cables and transducer
- Precision instrument, calibrated and highly accurate
- Complete with software for data acquisition, processing and visualization
- GENERATE MAPS INSTANTLY
- Integrated DGPS to geo-reference data
- High resolution, full color echogram

MX AQUATIC HABITAT ECHOSOUNDER

Echosounder Specifications

- Transmit Power: 105 Watts RMS
- Input power: 12-18 VDC or 85-264 VAC
- Draw: 5 Watts, Fuses: 1 Amp AC 1.5 Amp DC
- Transmit source level: 213 dB re 1uPa
- Pulse length: 0.4ms, Ping rate 5Hz
- Range resolution: 1.7cm
- Accuracy: 1.7cm +/- 0.2% of depth
- Depth range: 0-100m
- Operating condition: 0-50 °C
- DGPS positional accuracy: <3m, 95% typical
- DGPS velocity accuracy: 0.1 knot RMS
- DGPS update rate: 1sec
- RS232 (GPS in/out)

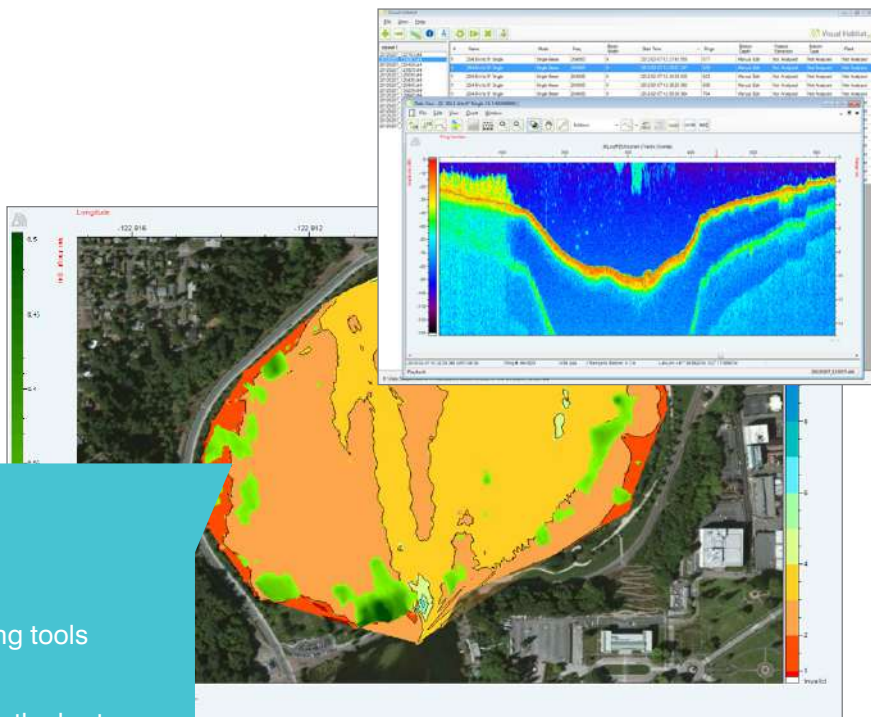


Dimensions

- Echosounder Unit: 37cm x 26cm x 15cm
- (14.6" x 10.2"x 6"), Wt. 5.4 kg (12lbs)
- Transducer: 8.4cm L x 4.3cm diam (3.3"x1.7")
- 1.36 kg (3lbs), Stem threads 1/2" - NPS

Transducer

- Single frequency – 204.8 kHz
- Beam angle – 8.5 degree conical
- Heavy duty stainless steel housing



Visual Habitat

Data Analysis Software Features

- Visual Habitat – Fast, user friendly mapping tools
- SAV – canopy height, % cover, biomass
- Bathymetry – produce highly accurate depth charts
- Substrate classification – ID rock, sand, mud
- Export results as CSV or KML files